

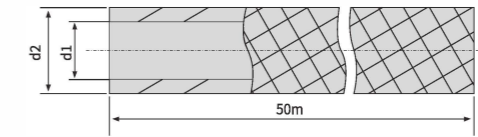


# DME EOC标准/英式标准



## KM 1090

- Hoses
- Schläuche
- Slangen
- Tuyaux souples



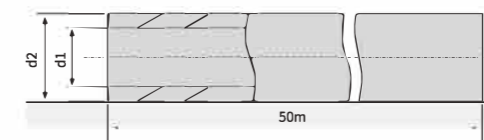
- Color B=Blue,R=Red
- Farbe B=Blau,R=Rot
- Kleur B=blauw,R=rood
- Colour B=bleu,R=rouge

- Mat.:PVC ● Nylon reinforced
- Nylon-Gewebereinlage
- Versterkt nylon
- Nylon renforcé

REF	d1	=d <sub>1</sub>	d <sub>2</sub>	P <sub>max</sub> bar	P (bar)		
					20°C	40°C	60°C
KM 1090 6 B/R	6		12	70	22	16	8
KM 1090 8 B/R	8		14	60	20	14	7
KM 1090 9 B/R	10		14	60	20	14	7
KM 1090 13 B/R	12		21	50	18	12	6

## KM 1080

- Hoses
- Schläuche
- Slangen
- Tuyaux souples



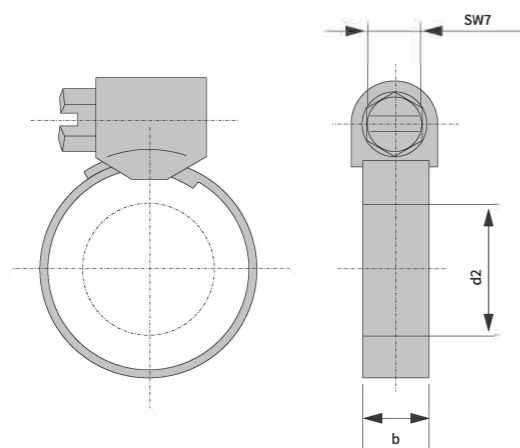
- Mat.:PVC ● Transparent
- Transparent
- Transparent
- Transparent

REF	d1	=d <sub>1</sub>	d <sub>2</sub>	p bar/20°C
KM 1080 9		10	16	9
KM 1080 13		13	19	7



KM 1700

- Hose clamps
- Schlauchschellen
- Slangklemmen
- Colliers de serrage



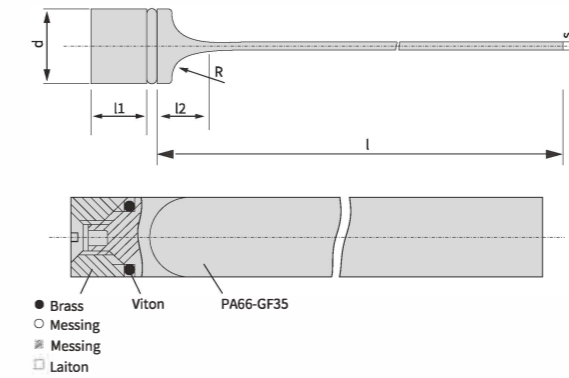
Mat.:St DIN 3017

REF	Size Grösse Grootte Dimension	$d_2$	b
KM 1700 1		8-12	9
KM 1700 2		10-16	9
KM 1700 3		12-20	9
KM 1700 4		16-25	9
KM 1700 5		20-32	9



KM 700

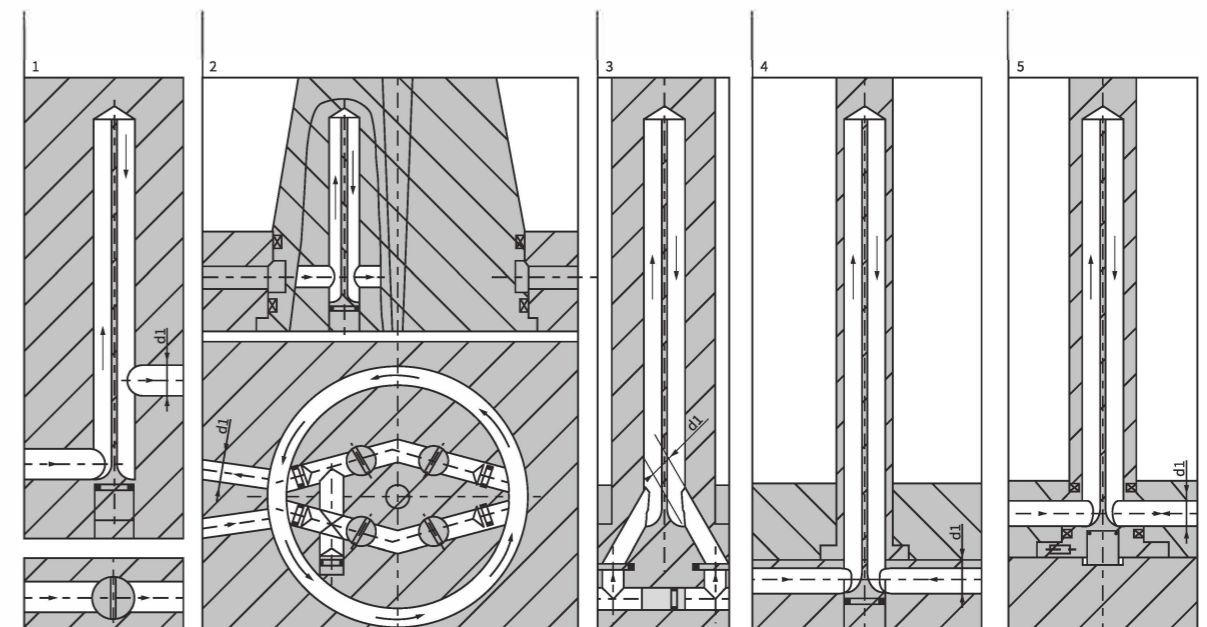
- Baffle ribs
- Umlenkstege
- Koelschotten
- Séparateurs



T Max.:200°C

REF	d	l	L <sub>1</sub>	L <sub>2</sub>	R	S	$d_1$	recommended empfohlen aanbevelen recommande	Installation key Montageschlüssel Instalatiesleutel Clé d'installation
KM 700 6		200	6	3.5	2.4	1	4	●	KM 106/KM 306
KM 700 8		200	6	4.5	3.4	1	5	●	KM 108/KM 308
KM 700 10		200	7	5	3.5	1.5	6	●	KM 110/KM 310
KM 700 12		200	9	6	4.5	1.5	8	●	KM 112/KM 312
KM 700 14		200	10.5	7.5	5.5	1.5	10	●	KM 112/KM 312

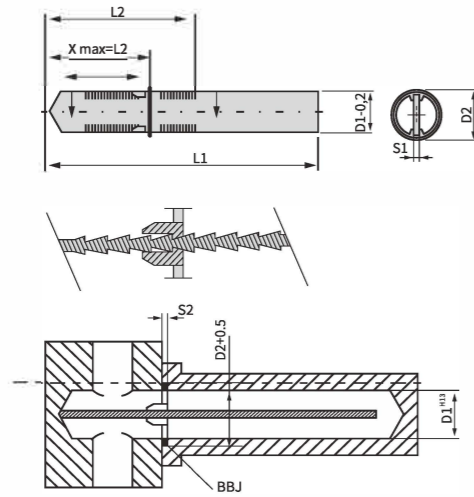
- A drilled hole (finish  $d1^{H13}$ ) is adequate. Don't ream the hole.
- Oberflächenrauigkeit der herzustellenden Bohrungen in Spiralbohrer-Qualität  $d1^{H13}$
- Afwerking van de boorgaten  $d1^{H13}$  is voldoende. Boring niet ruimen.
- La finition des perçages  $d1^{H13}$  convient. Ne pas aléser.





KMP-BBJ

- Plastic baffle ribs
- Umlenkstäbe in Kunststoff
- Koelschotten in kunststof
- Séparateurs en plastique



- A drilled hole (finish  $D1^{H13}$ ) is adequate. Don't ream the hole.
- Oberflächenrauigkeit der herzustellenden Bohrungen in Spiralbohrer-Qualität  $D1^{H13}$
- Afwerking van de boorgaten  $D1^{H13}$  is voldoende. Boring niet ruimen.
- La finition des perçages  $D1^{H13}$  convient. Ne pas aléser.

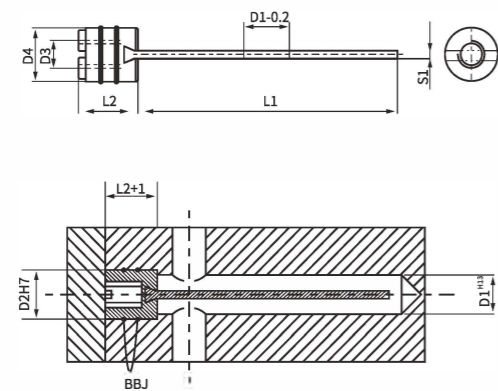
Mat.: ● High temperature resistant plastic ○ Hochtemperatur beständiger Kunststoff  
 ■ Hoge temperatuur bestendige kunststof □ Plastique à haute température

BBJ } Viton  
 ● O-rings ○ O-ringen }  
 ■ O-Rings □ Joints toriques } 200°C

REF	D1	D2	L1	L2	S1	S2	REF
KMP 0001	10	17	220	55	1.5	2.0	BBJ 0001
KMP 0002	15	22	300	70	1.8	2.0	BBJ 0002
KMP 0003	20	28	350	90	2.0	2.4	BBJ 0003
KMP 0004	25	33	380	115	2.2	2.4	BBJ 0004

KMP-BBJ

- Plastic baffle ribs
- Umlenkstäbe in Kunststoff
- Koelschotten in kunststof
- Séparateurs en plastique



- A drilled hole (finish  $D1^{H13}$ ) is adequate.
- Oberflächenrauigkeit der herzustellenden Bohrungen in Spiralbohrer-Qualität  $D1^{H13}$
- Afwerking van de boorgaten  $D1^{H13}$  is voldoende. Boring niet ruimen.
- La finition des perçages  $D1^{H13}$  convient. Ne pas aléser.

Mat.: ● High temperature resistant plastic ○ Hochtemperatur beständiger Kunststoff  
 ■ Hoge temperatuur bestendige kunststof □ Plastique à haute température

BBJ } Viton  
 ● O-rings ○ O-ringen }  
 ■ O-Rings □ Joints toriques } 200°C

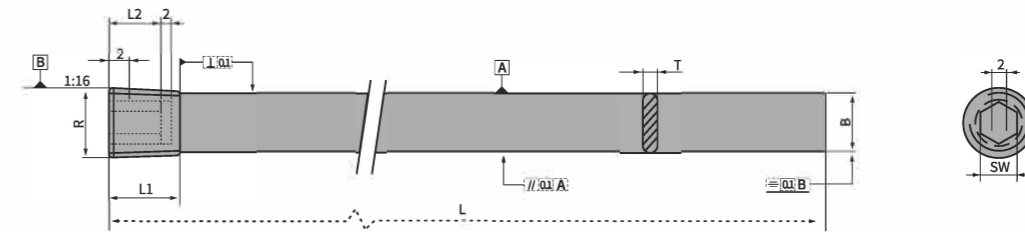
REF	D1	D2	D3	D4	L1	L2	S1	REF
KMP 0101	10	12	M6	11.7	180	13	1.5	BBJ 0101
KMP 0102	15	16	M8	15.7	250	16	1.8	BBJ 0102
KMP 0103	20	22	M12	21.7	300	20	2.0	BBJ 0103
KMP 0104	25	26	M16	25.7	390	22	2.2	BBJ 0104



KM

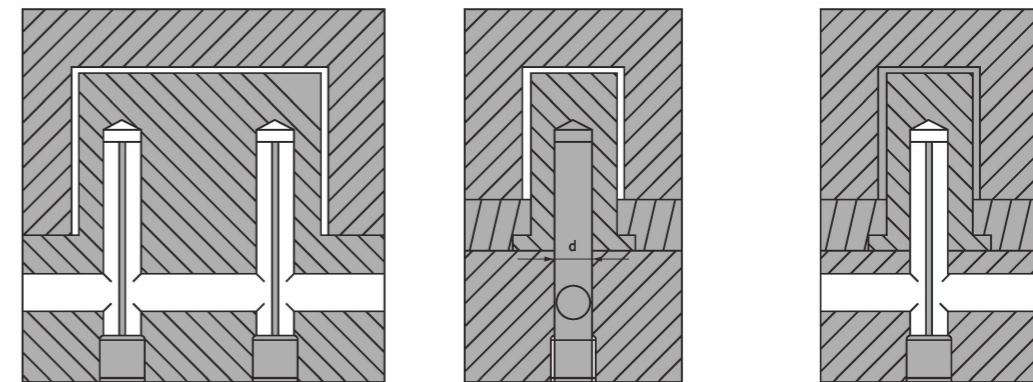
- Brass plug baffles
- Messing Umlenkstäbe
- Messing koelschotten
- Séparateurs en laiton

- A drilled hole (finish  $d1^{H13}$ ) is adequate. Don't ream the hole.
- Oberflächenrauigkeit der herzustellenden Bohrungen in Spiralbohrer-Qualität  $d1^{H13}$
- Afwerking van de boorgaten  $d1^{H13}$  is voldoende. Boring niet ruimen.
- La finition des perçages  $d1^{H13}$  convient. Ne pas aléser.



Mat.: ● Brass ○ Messing ■ Messing □ Laiton

REF	R	SW	B	L	L1	T	L2	d
KM-100-1/8	1/8" BSPT	5	8.2	100	10	2.0	6	8.5
KM-200-1/8	1/8" BSPT	5	8.2	200	10	2.0	6	8.5
KM-125-1/4	1/4" BSPT	6	11.2	125	11	2.5	7	11.5
KM-250-1/4	1/4" BSPT	6	11.2	250	11	2.5	7	11.5
KM-150-3/8	3/8" BSPT	8	14.7	150	13	2.5	9	15.0
KM-300-3/8	3/8" BSPT	8	14.7	300	13	2.5	9	15.0
KM-200-1/2	1/2" BSPT	10	18.2	200	16	2.5	11	18.5
KM-400-1/2	1/2" BSPT	10	18.2	400	16	2.5	11	18.5
KM-300-3/4	3/4" BSPT	12	23.2	300	19	3.0	13	23.5
KM-500-3/8	3/4" BSPT	12	23.2	500	19	3.0	13	23.5



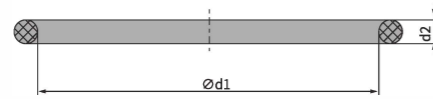




### KM 1700

- O-Rings
- O-Ringe
- O-Ringen
- Joints torique

- Special compact designs upon request
- Kompaktbauelemente in Sonderanfertigung auf Anfrage
- Compacte uitvoeringen op aanvraag
- Exécutions compactes sur demand



T = -40 → +100°C

Mat.:Perbunan ● Hardness:~72 Shore ○ Härte:~72 Shore ■ Hardheid:~72 Shore □ Dureté:~72 Shore

REF	d <sub>1</sub> x d <sub>2</sub>	b	t	de <sub>1</sub>	de <sub>2</sub>	da	dm	REF	d <sub>1</sub> x d <sub>2</sub>	b	t	de <sub>1</sub>	de <sub>2</sub>	da	dm
KM 1700	6 x 2.00	2.6	1.6	9.2	6	9.2	8.00	KM 1700	40 x 3.00	3.9	2.4	44.8	40	44.8	43.00
KM 1700	6 x 2.50	3.2	2.0	10.0	6	10.0	8.50	KM 1700	40 x 4.00	5.2	3.2	46.4	40	46.4	44.00
KM 1700	8 x 2.00	2.6	1.6	11.2	8	11.2	10.00	KM 1700	42 x 3.00	3.9	2.4	46.8	42	46.8	45.00
KM 1700	10 x 2.00	2.6	1.6	13.2	10	13.2	12.00	KM 1700	45 x 4.00	5.2	3.2	51.4	45	51.4	49.00
KM 1700	10 x 3.00	3.9	2.4	14.8	10	14.8	13.00	KM 1700	48 x 4.00	5.2	3.2	54.4	48	54.4	52.00
KM 1700	12 x 1.50	1.9	1.2	14.8	12	14.2	13.50	KM 1700	50 x 2.00	2.6	1.6	53.2	50	53.2	52.00
KM 1700	12 x 2.00	2.6	1.6	15.2	12	15.2	14.00	KM 1700	50 x 4.00	5.2	3.2	56.4	50	56.4	54.00
KM 1700	12 x 3.00	3.9	2.4	16.8	12	16.8	15.00	KM 1700	52 x 3.00	3.9	2.4	56.8	52	56.8	55.00
KM 1700	13 x 3.00	3.9	2.4	17.8	13	17.8	16.00	KM 1700	59 x 3.00	3.9	2.4	63.8	59	63.8	62.00
KM 1700	14 x 1.60	2.0	1.3	16.6	14	16.6	15.60	KM 1700	60 x 3.00	3.9	2.4	64.8	60	64.8	63.00
KM 1700	14 x 2.00	2.6	1.6	17.2	14	17.2	16.00	KM 1700	60 x 4.00	5.2	3.2	66.4	60	66.4	64.00
KM 1700	16 x 1.25	1.6	1.0	18.0	16	18.0	17.25	KM 1700	70 x 3.00	3.9	2.4	74.8	70	74.8	73.00
KM 1700	16 x 2.00	2.6	1.6	19.2	16	19.2	18.00	KM 1700	70 x 4.00	5.2	3.2	76.4	70	76.4	74.00
KM 1700	17 x 3.00	3.9	2.4	21.8	17	21.8	20.00	KM 1700	80 x 2.80	3.7	2.2	84.4	80	84.4	82.80
KM 1700	18 x 1.50	1.9	1.2	20.4	18	20.4	19.50	KM 1700	80 x 4.00	5.2	3.2	86.4	80	86.4	84.00
KM 1700	20 x 2.00	2.6	1.6	23.2	20	23.2	22.00	KM 1700	84 x 3.00	3.9	2.4	88.8	84	88.8	87.00
KM 1700	20 x 3.00	3.9	2.4	24.8	20	24.8	23.00	KM 1700	90 x 4.00	5.2	3.2	96.4	90	96.4	94.00
KM 1700	20 x 4.00	5.2	3.2	26.4	20	26.4	24.00	KM 1700	100 x 3.00	3.9	2.4	104.8	100	104.8	103.0
KM 1700	22 x 3.00	3.9	2.4	26.8	22	26.8	25.00	KM 1700	100 x 4.00	5.2	3.2	106.4	100	106.4	104.0
KM 1700	26 x 3.00	3.9	2.4	30.8	26	30.8	29.00	KM 1700	105 x 4.00	5.2	3.2	111.4	105	111.4	109.0
KM 1700	27 x 3.20	4.2	2.6	32.2	27	32.2	30.20	KM 1700	120 x 2.00	2.6	1.6	123.2	120	123.2	122.0
KM 1700	30 x 2.00	2.6	1.6	33.2	30	33.2	32.00	KM 1700	130 x 5.00	6.5	4.0	138.0	130	138.0	135.0
KM 1700	30 x 3.00	3.9	2.4	34.8	30	34.8	33.00	KM 1700	140 x 4.00	5.2	3.2	146.4	140	146.4	144.0
KM 1700	30 x 4.00	5.2	3.2	36.4	30	36.4	34.00	KM 1700	150 x 2.00	2.6	1.6	153.2	150	153.2	152.0
KM 1700	32 x 4.00	5.2	3.2	38.4	32	38.4	36.00	KM 1700	150 x 4.00	5.2	3.2	156.4	150	156.4	154.0
KM 1700	35 x 3.20	4.2	2.6	40.2	35	40.2	38.20	KM 1700	185 x 6.00	7.5	4.8	194.6	185	194.6	191.0
KM 1700	38 x 4.00	5.2	3.2	44.4	38	44.4	42.00	KM 1700	210 x 4.00	5.2	3.2	216.4	210	216.4	214.0
KM 1700	40 x 2.00	2.6	1.6	43.2	40	43.2	42.00								



### KM 1710

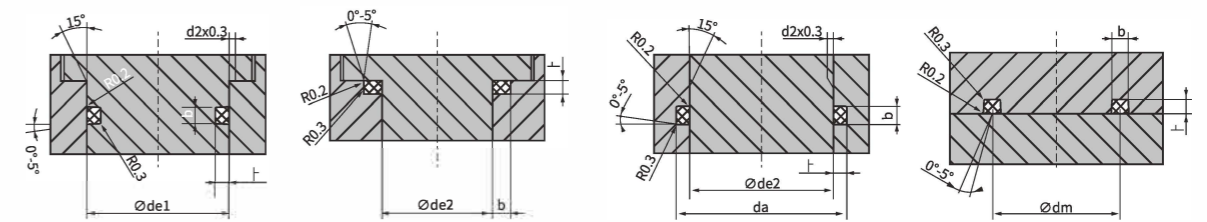
- O-Rings
- O-Ringe
- O-Ringen
- Joints torique

Mat.:FPM(Viton)

- Hardness:~80 Shore. T max: +200°C air-permanent. +250°C air-temporary. +100°C water-permanent
- Härte:~80 Shore. T max: +200°C Luft-permanent. +250°C Luft-Kurzzeitig. +100°C Wasser-permanent
- Hardheid:~80 Shore. T max: +200°C Lucht-permanent. +250°C lucht-tijdelijk. +100°C water-permanent.
- Dureté:~80 Shore. T max: +200°C air permanent. +250°C air-temporaire. +100°C de l'eau-permanent.



REF	d <sub>1</sub> x d <sub>2</sub>	b	t	de <sub>1</sub>	de <sub>2</sub>	da	dm	REF	d <sub>1</sub> x d <sub>2</sub>	b	t	de <sub>1</sub>	de <sub>2</sub>	da	dm
KM 1710	3,50 x 1.50	1.9	1.20	6	3.5	5.7	5.00	KM 1710	25.00 x 3.00	3.9	2.40	30	25.0	29.6	28.00
KM 1710	5.50 x 1.50	1.9	1.20	8	5.5	7.7	7.00	KM 1710	27.00 x 3.00	3.9	2.40	32	27.0	31.6	30.00
KM 1710	6.00 x 2.00	2.7	1.50	10	6.0	9.0	8.00	KM 1710	30.00 x 3.00	3.9	2.40	35	30.0	34.6	33.00
KM 1710	6.35 x 1.78	2.2	1.45	10	6.5	9.1	8.13	KM 1710	35.00 x 3.00	3.9	2.40	40	35.0	39.6	38.00
KM 1710	7.50 x 1.50	1.9	1.20	10	7.5	9.7	9.00	KM 1710	40.00 x 3.00	3.9	2.40	45	40.0	44.6	43.00
KM 1710	8.00 x 2.50	3.2	2.00	12	8.0	11.7	10.50	KM 1710	45.00 x 3.00	3.9	2.40	50	45.0	49.6	48.00
KM 1710	10.00 x 2.50	3.2	2.00	14	10.0	13.7	12.50	KM 1710	55.00 x 3.00	3.9	2.40	60	55.0	59.6	58.00
KM 1710	12.00 x 2.50	2.7	1.50	16	12.0	15.0	14.00	KM 1710	58.00 x 3.00	3.9	2.40	63	58.0	62.6	61.00
KM 1710	12.00 x 2.50	3.2	2.00	16	12.0	15.7	14.50	KM 1710	64.00 x 4.00	5.2	3.20	70	64.0	70.2	68.00
KM 1710	12.42 x 1.78	2.2	1.45	16	12.5	15.1	14.20	KM 1710	74 x 4.00	5.2	3.2	80	74	80.2	78
KM 1710	14.00 x 2.50	3.2	2.00	18	14.0	17.7	16.50	KM 1710	84 x 4.00	5.2	3.2	90	84	90.2	88
KM 1710	16.00 x 2.50	3.2	2.00	20	16.0	19.7	18.50	KM 1710	94 x 4.00	5.2	3.2	100	94	100.2	98
KM 1710	17.00 x 3.00	3.9	2.40	22	17.0	21.6	20.00	KM 1710	104 x 4.00	5.2	3.2	110	104	110.2	108
KM 1710	20.00 x 3.00	3.9	2.40	25	20.0	24.6	23.00	KM 1710	120 x 4.00	5.2	3.2	126	120	126.2	124
KM 1710	21.00 x 2.00	2.7	1.50	25	21.0	24.0	23.00	KM 1710	134 x 4.00	5.2	3.2	140	134	140.2	138
KM 1710	21.95 x 1.78	2.2	1.45	25	22.0	24.6	23.73	KM 1710	155 x 4.00	5.2	3.2	161	155	161.2	159
KM 1710	23.00 x 3.00	3.9	2.40	28	23.0	27.6	26.00								

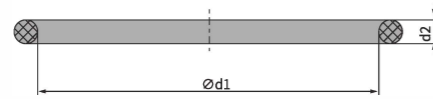




### KM 1700

- O-Rings
- O-Ringe
- O-Ringen
- Joints torique

- Special compact designs upon request
- Kompaktbauelemente in Sonderanfertigung auf Anfrage
- Compacte uitvoeringen op aanvraag
- Exécutions compactes sur demand



T = -40 → +100°C

Mat.:Perbunan ● Hardness:~72 Shore ○ Härte:~72 Shore ■ Hardheid:~72 Shore □ Dureté:~72 Shore

REF	d <sub>1</sub> x d <sub>2</sub>	b	t	de <sub>1</sub>	de <sub>2</sub>	da	dm	REF	d <sub>1</sub> x d <sub>2</sub>	b	t	de <sub>1</sub>	de <sub>2</sub>	da	dm
KM 1700	6 x 2.00	2.6	1.6	9.2	6	9.2	8.00	KM 1700	40 x 3.00	3.9	2.4	44.8	40	44.8	43.00
KM 1700	6 x 2.50	3.2	2.0	10.0	6	10.0	8.50	KM 1700	40 x 4.00	5.2	3.2	46.4	40	46.4	44.00
KM 1700	8 x 2.00	2.6	1.6	11.2	8	11.2	10.00	KM 1700	42 x 3.00	3.9	2.4	46.8	42	46.8	45.00
KM 1700	10 x 2.00	2.6	1.6	13.2	10	13.2	12.00	KM 1700	45 x 4.00	5.2	3.2	51.4	45	51.4	49.00
KM 1700	10 x 3.00	3.9	2.4	14.8	10	14.8	13.00	KM 1700	48 x 4.00	5.2	3.2	54.4	48	54.4	52.00
KM 1700	12 x 1.50	1.9	1.2	14.8	12	14.2	13.50	KM 1700	50 x 2.00	2.6	1.6	53.2	50	53.2	52.00
KM 1700	12 x 2.00	2.6	1.6	15.2	12	15.2	14.00	KM 1700	50 x 4.00	5.2	3.2	56.4	50	56.4	54.00
KM 1700	12 x 3.00	3.9	2.4	16.8	12	16.8	15.00	KM 1700	52 x 3.00	3.9	2.4	56.8	52	56.8	55.00
KM 1700	13 x 3.00	3.9	2.4	17.8	13	17.8	16.00	KM 1700	59 x 3.00	3.9	2.4	63.8	59	63.8	62.00
KM 1700	14 x 1.60	2.0	1.3	16.6	14	16.6	15.60	KM 1700	60 x 3.00	3.9	2.4	64.8	60	64.8	63.00
KM 1700	14 x 2.00	2.6	1.6	17.2	14	17.2	16.00	KM 1700	60 x 4.00	5.2	3.2	66.4	60	66.4	64.00
KM 1700	16 x 1.25	1.6	1.0	18.0	16	18.0	17.25	KM 1700	70 x 3.00	3.9	2.4	74.8	70	74.8	73.00
KM 1700	16 x 2.00	2.6	1.6	19.2	16	19.2	18.00	KM 1700	70 x 4.00	5.2	3.2	76.4	70	76.4	74.00
KM 1700	17 x 3.00	3.9	2.4	21.8	17	21.8	20.00	KM 1700	80 x 2.80	3.7	2.2	84.4	80	84.4	82.80
KM 1700	18 x 1.50	1.9	1.2	20.4	18	20.4	19.50	KM 1700	80 x 4.00	5.2	3.2	86.4	80	86.4	84.00
KM 1700	20 x 2.00	2.6	1.6	23.2	20	23.2	22.00	KM 1700	84 x 3.00	3.9	2.4	88.8	84	88.8	87.00
KM 1700	20 x 3.00	3.9	2.4	24.8	20	24.8	23.00	KM 1700	90 x 4.00	5.2	3.2	96.4	90	96.4	94.00
KM 1700	20 x 4.00	5.2	3.2	26.4	20	26.4	24.00	KM 1700	100 x 3.00	3.9	2.4	104.8	100	104.8	103.0
KM 1700	22 x 3.00	3.9	2.4	26.8	22	26.8	25.00	KM 1700	100 x 4.00	5.2	3.2	106.4	100	106.4	104.0
KM 1700	26 x 3.00	3.9	2.4	30.8	26	30.8	29.00	KM 1700	105 x 4.00	5.2	3.2	111.4	105	111.4	109.0
KM 1700	27 x 3.20	4.2	2.6	32.2	27	32.2	30.20	KM 1700	120 x 2.00	2.6	1.6	123.2	120	123.2	122.0
KM 1700	30 x 2.00	2.6	1.6	33.2	30	33.2	32.00	KM 1700	130 x 5.00	6.5	4.0	138.0	130	138.0	135.0
KM 1700	30 x 3.00	3.9	2.4	34.8	30	34.8	33.00	KM 1700	140 x 4.00	5.2	3.2	146.4	140	146.4	144.0
KM 1700	30 x 4.00	5.2	3.2	36.4	30	36.4	34.00	KM 1700	150 x 2.00	2.6	1.6	153.2	150	153.2	152.0
KM 1700	32 x 4.00	5.2	3.2	38.4	32	38.4	36.00	KM 1700	150 x 4.00	5.2	3.2	156.4	150	156.4	154.0
KM 1700	35 x 3.20	4.2	2.6	40.2	35	40.2	38.20	KM 1700	185 x 6.00	7.5	4.8	194.6	185	194.6	191.0
KM 1700	38 x 4.00	5.2	3.2	44.4	38	44.4	42.00	KM 1700	210 x 4.00	5.2	3.2	216.4	210	216.4	214.0
KM 1700	40 x 2.00	2.6	1.6	43.2	40	43.2	42.00								



### KM 1710

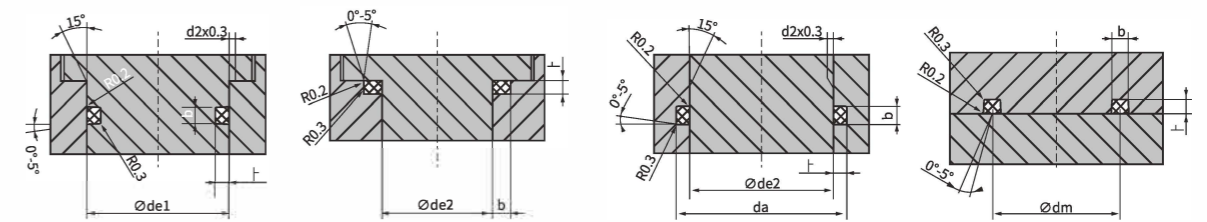
- O-Rings
- O-Ringe
- O-Ringen
- Joints torique

Mat.:FPM(Viton)

- Hardness:~80 Shore. T max: +200°C air-permanent. +250°C air-temporary. +100°C water-permanent
- Härte:~80 Shore. T max: +200°C Luft-permanent. +250°C Luft-Kurzzeitig. +100°C Wasser-permanent
- Hardheid:~80 Shore. T max: +200°C Lucht-permanent. +250°C lucht-tijdelijk. +100°C water-permanent.
- Dureté:~80 Shore. T max: +200°C air permanent. +250°C air-temporaire. +100°C de l'eau-permanent.



REF	d <sub>1</sub> x d <sub>2</sub>	b	t	de <sub>1</sub>	de <sub>2</sub>	da	dm	REF	d <sub>1</sub> x d <sub>2</sub>	b	t	de <sub>1</sub>	de <sub>2</sub>	da	dm
KM 1710	3,50 x 1.50	1.9	1.20	6	3.5	5.7	5.00	KM 1710	25.00 x 3.00	3.9	2.40	30	25.0	29.6	28.00
KM 1710	5.50 x 1.50	1.9	1.20	8	5.5	7.7	7.00	KM 1710	27.00 x 3.00	3.9	2.40	32	27.0	31.6	30.00
KM 1710	6.00 x 2.00	2.7	1.50	10	6.0	9.0	8.00	KM 1710	30.00 x 3.00	3.9	2.40	35	30.0	34.6	33.00
KM 1710	6.35 x 1.78	2.2	1.45	10	6.5	9.1	8.13	KM 1710	35.00 x 3.00	3.9	2.40	40	35.0	39.6	38.00
KM 1710	7.50 x 1.50	1.9	1.20	10	7.5	9.7	9.00	KM 1710	40.00 x 3.00	3.9	2.40	45	40.0	44.6	43.00
KM 1710	8.00 x 2.50	3.2	2.00	12	8.0	11.7	10.50	KM 1710	45.00 x 3.00	3.9	2.40	50	45.0	49.6	48.00
KM 1710	10.00 x 2.50	3.2	2.00	14	10.0	13.7	12.50	KM 1710	55.00 x 3.00	3.9	2.40	60	55.0	59.6	58.00
KM 1710	12.00 x 2.50	2.7	1.50	16	12.0	15.0	14.00	KM 1710	58.00 x 3.00	3.9	2.40	63	58.0	62.6	61.00
KM 1710	12.00 x 2.50	3.2	2.00	16	12.0	15.7	14.50	KM 1710	64.00 x 4.00	5.2	3.20	70	64.0	70.2	68.00
KM 1710	12.42 x 1.78	2.2	1.45	16	12.5	15.1	14.20	KM 1710	74 x 4.00	5.2	3.2	80	74	80.2	78
KM 1710	14.00 x 2.50	3.2	2.00	18	14.0	17.7	16.50	KM 1710	84 x 4.00	5.2	3.2	90	84	90.2	88
KM 1710	16.00 x 2.50	3.2	2.00	20	16.0	19.7	18.50	KM 1710	94 x 4.00	5.2	3.2	100	94	100.2	98
KM 1710	17.00 x 3.00	3.9	2.40	22	17.0	21.6	20.00	KM 1710	104 x 4.00	5.2	3.2	110	104	110.2	108
KM 1710	20.00 x 3.00	3.9	2.40	25	20.0	24.6	23.00	KM 1710	120 x 4.00	5.2	3.2	126	120	126.2	124
KM 1710	21.00 x 2.00	2.7	1.50	25	21.0	24.0	23.00	KM 1710	134 x 4.00	5.2	3.2	140	134	140.2	138
KM 1710	21.95 x 1.78	2.2	1.45	25	22.0	24.6	23.73	KM 1710	155 x 4.00	5.2	3.2	161	155	161.2	159
KM 1710	23.00 x 3.00	3.9	2.40	28	23.0	27.6	26.00								



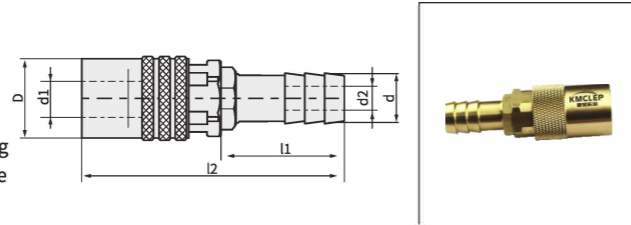


### KMK

- Jiffy Matics
- Snelafsluitkoppelingen
- Schnellverschlusßkupplungen
- Raccords rapides Jiffy Matics

Mat.: ● Brass-stainless    ■ Messing-rosrbestending  
 ○ Messing-rostfreier Stahl    □ Laiton-acier inoxyidable

- Straight ○ Gerade ■ Recht □ Droit

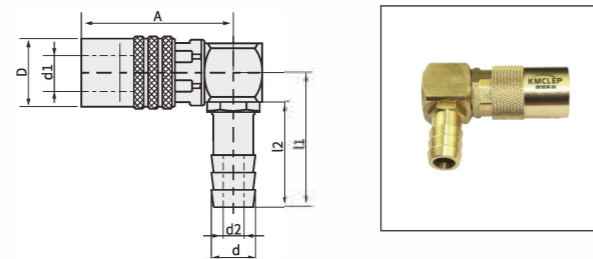


REF	d1	d2	d	D	l1	l2	SERIE(S)
KMK-106	9	5	7.3	17.0	27	57	N6
KMK-109	9	6	10.5	17.0	27	57	N6
KMK-111	13	9	12.2	22.6	27	68	N9
KMK-113	13	9	14.0	22.6	27	68	N9
KMK-119	20	16	20.0	30.0	46	103	N16

### KMK(90°)

- Jiffy Matics
- Snelafsluitkoppelingen
- Schnellverschlusßkupplungen
- Raccords rapides Jiffy Matics

Mat.: ● Brass-stainless    ■ Messing-rosrbestending  
 ○ Messing-rostfreier Stahl    □ Laiton-acier inoxyidable

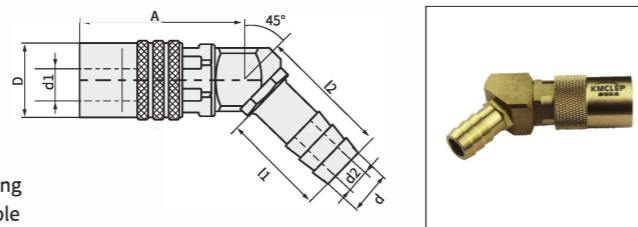


REF	d1	d2	d	D	A	l1	l2	SERIE(S)
KMK-206	9	5	7.3	17.0	38	27	34	N6
KMK-209	9	6	10.5	17.0	38	27	34	N6
KMK-211	13	9	12.2	22.6	52	27	37	N9
KMK-213	13	9	14.0	22.6	52	27	37	N9
KMS-219	20	16	20.0	30.0	74	46	69	N16

### KMK(45°)

- Jiffy Matics
- Snelafsluitkoppelingen
- Schnellverschlusßkupplungen
- Raccords rapides Jiffy Matics

Mat.: ● Brass-stainless    ■ Messing-rosrbestending  
 ○ Messing-rostfreier Stahl    □ Laiton-acier inoxyidable



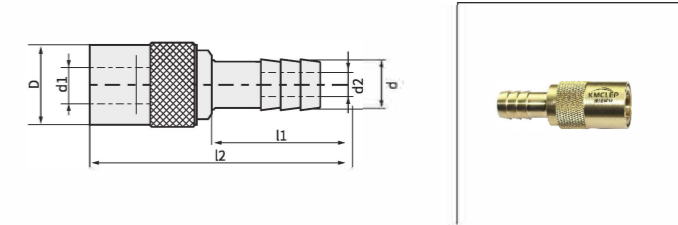
REF	d1	d2	d	D	A	l1	l2	SERIE(S)
KMK-306	9	5	7.3	17.0	38	27	30	N6
KMK-309	9	6	10.5	17.0	38	27	30	N6
KMK-311	13	9	12.2	22.6	52	27	31	N9
KMK-313	13	9	14.0	22.6	52	27	31	N9
KMK-319	20	16	20.0	30.0	73	46	69	N16



### KM

- Jiffy Tites
- Snelkoppelingen
- Schnellkupplungen
- Raccords rapides Jiffy Tites

Mat.: ● Brass-stainless steel    ■ Messing-rosrbestending staal  
 ○ Messing-rostfreier Stahl    □ Laiton-acier inoxyidable

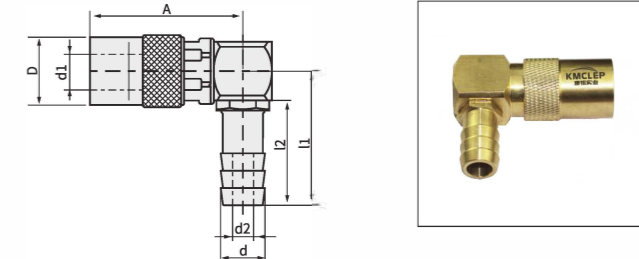


REF	d1	d2	d	D	l1	l2	SERIE(S)
KM-106	9	5	7.3	17.0	25	52	N6
KM-109	9	6	10.5	17.0	25	52	N6
KM-111	13	9	12.2	22.6	25	62	N9
KM-113	13	9	14.0	22.6	25	62	N9
KM-119	20	16	20.0	30.0	32	77	N16

### KM(90°)

- Jiffy Tites
- Snelkoppelingen
- Schnellkupplungen
- Raccords rapides Jiffy Tites

Mat.: ● Brass-stainless steel    ■ Messing-rosrbestending staal  
 ○ Messing-rostfreier Stahl    □ Laiton-acier inoxyidable

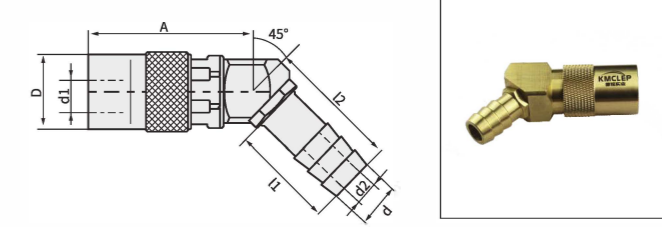


REF	d1	d2	d	D	A	l1	l2	SERIE(S)
KM-206	9	5	7.3	17.0	38	27	34	N6
KM-209	9	6	10.5	17.0	38	27	34	N6
KM-211	13	9	12.2	22.6	52	27	37	N9
KM-213	13	9	14.0	22.6	52	27	37	N9
KM-219	20	16	20.0	30.0	68	46	69	N16

### KM(45°)

- Jiffy Tites
- Snelkoppelingen
- Schnellkupplungen
- Raccords rapides Jiffy Tites

Mat.: ● Brass-stainless steel    ■ Messing-rosrbestending staal  
 ○ Messing-rostfreier Stahl    □ Laiton-acier inoxyidable

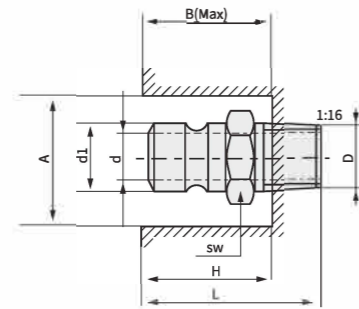


REF	d1	d2	d	D	A	l1	l2	SERIE(S)
KM-306	9	5	7.3	17.0	38	27	30	N6
KM-309	9	6	10.5	17.0	38	27	30	N6
KM-311	13	9	12.2	22.6	52	27	31	N9
KM-313	13	9	14.0	22.6	52	27	31	N9
KM-319	20	16	20.0	30.0	67	46	69	N16



### KMN

- Connector plugs with teflon seal
- Anschlußnippel mit Teflon Dichtung
- Aansluitnippels met teflon dichting
- Embouts avec teflon d'étanchéité

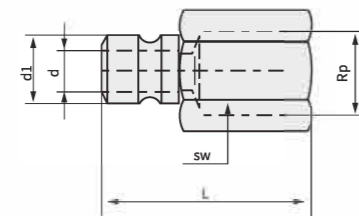


Mat.: ● Brass ○ Messing ■ Messing □ Laiton

REF	D (M/R)	d1	d	L	SW	A	B	H	SERIE(S)
KMN6-1/8" A	1/8"	9	6	24.0	13	22	18	17	N6
KMN6-MA	M10 x1			23.0					
KMN6-1/4" A	1/4"			29.0					
KMN6-3/8" A	3/8"	30.0	19	30	22	21	N9		
KMN9-1/4" A	1/4"	13	9	34.0	16	26		26	
KMN9-3/8" A	3/8"			34.0	19	30		28	26
KMN9-MA	M10x1	6	29.5	16	26	26	25		
KMN9-1/2" A	1/2"	9	39.0	24	37	28	26	N16	
KMN16-1/2" A	1/2"	20	16	44.0	22	32	38		37
KMN16-3/4" A	3/4"			45.0	29	38	40		38

### KMN

- Connector plugs
- Anschlußnippel
- Aansluitnippels
- Embouts



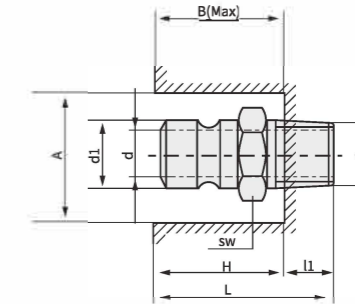
Mat.: ● Brass ○ Messing ■ Messing □ Laiton

REF	Rp	d1	d	SW	L	SERIE(S)
KMN 6-1/8"l	1/8"	9	6	13	28	N6
KMN 6-1/4"l	1/4"			16	32	
KMN 6-3/8"l	3/8"			19	34	
KMN 9-1/4"l	1/4"	13	9	16	37	N9
KMN 9-3/8"l	3/8"			19	39	
KMN 9-1/2"l	1/2"	24	46			



### KMFN

- Connector plugs for FSK and FSVK
- Anschlußnippel für FSK & FSVk
- Aansluitnippels voor FSK & FSVK
- Embouts pour FSK & FSVK



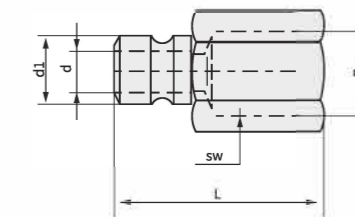
- Cylindrical threads
- Zylindrisches Gewinde
- Cylindrische draad
- Filetage cylindrique

Mat.: ● Brass ○ Messing ■ Messing □ Laiton

REF	A	B	H	d1	d	SW	l1	L	G	SERIE(S)
KMFN 9-14A	30	22	20	13	9	16	14	34	1/4"	N9
FKMN 9-38A						19			3/8"	
KMFN 16-38A	32	25	25	20	9	22	15	40	3/8"	N16
KMFN 16-38AL							28		53	
KMFN 16-12A							20	45	1/2"	
KMFN 16-12AL							29	54	1/2"	

### KMFN

- Connector plugs for FSK and FSVK
- Anschlußnippel für FSK & FSVk
- Aansluitnippels voor FSK & FSVK
- Embouts pour FSK & FSVK



- With thread relief
- Gewinde mit Freistich
- Met draaduitloop
- Avec dégagement de filet

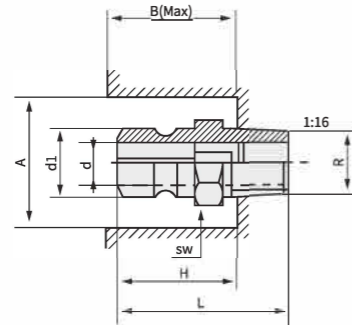
Mat.: ● Brass ○ Messing ■ Messing □ Laiton

REF	d1	d	L	SW	Rp	SERIE(S)
KMN 9-18l	13	9	32	16	1/8"	N6
KMN 9-14l			37	19	1/4"	
KMN 16-38l	20	15	40	22	3/8"	N19
KMN 16-12l			45	24	1/2"	



### KMS

- Shut-off connector plugs for SVK
- Anschlußnippel mit automatischem Verschuß für SVK
- Nippels met automatische afsluiting voor SVK
- Embouts à fermeture automatique pour SVK

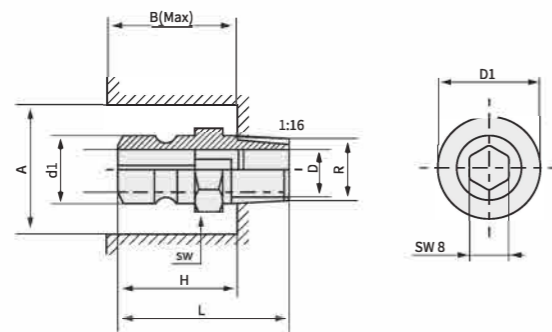


Mat.: ● Brass ○ Messing ■ Messing □ Laiton

REF	A	B	H	d1	d	D1	L	R	SERIE(S)
KMS 6-14-A	30	21	20	9	6	21	29	1/8"	N6
KMS 6-38-A	30					19	29.5	3/8"	
KMS 9-14-A	30			13	9	16	34	1/4"	N9
KMS 9-38-A	30					19	34	3/8"	
KMS 9-12-A	30	28	26			24	37	1/2"	

### KMN

- Connector plug with inner hexagon
- Anschlußnippel mit Innensechskant
- Aansluitnippel met binnenzeskant
- Embout avec hexagone intérieure



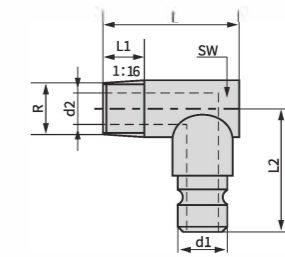
Mat.: ● Brass ○ Messing ■ Messing □ Laiton

REF	A	B	H	d1	d	D1	L	R	SERIE(S)
KMN 9 38 AH	30	28	26	13	9	21	34	3/8"	N9



### KMATN

- Angle nipples
- Winkelnippel
- Haakse aansluitnippels
- Embouts coudes

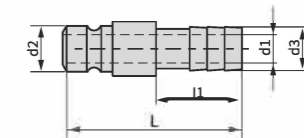


Mat.: ● Brass ○ Messing ■ Messing □ Laiton

REF	R	d1	d2	L	L1	L2	SW	SERIE(S)
KMATN 9	1/8"	9	6	27	9	23.0	11	N6
KMATN 13	1/4"	13	9	34	9	24.5	15	N9

### KMSTN

- Hose nipples
- Schlauchtüllen
- Koelsingnippels
- Raccords pour tuyaux souples

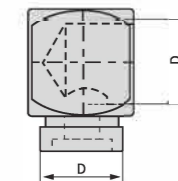


Mat.: ● Brass ○ Messing ■ Messing □ Laiton

REF	d1	d2	d3	l1	L	SERIE(S)
KMSTN-9	6.0	9	10	17	39	N6
KMSTN-13	9.0	13	14	21	41	N9
KMSTN-19	15.5	20	20	46	91	N16

### KMN/500

- 90°Angles
- 90°Winkelstücke
- 90°Uitvoeringen
- Exécutions 90°



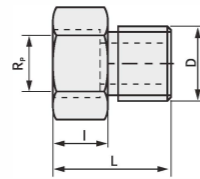
Mat.: ● Brass ○ Messing ■ Messing □ Laiton

REF	D	SERIE(S)
KMN6-90	UNEF7/16"-32	N6
KMN9-90	UNEF5/8"-24	N9
500-90	1/2"BSP	N16



### KMN

- Adapters
- Adapter
- Adapters
- Adaptateurs

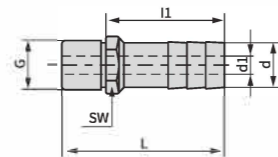


Mat.:  Brass  Messing  Messing  Laiton

REF	D	Rp	L	l	SERIE(S)
KMN6-18	UNEF 7/16"-32	1/8"	13	8	N6
KMN9-14	UNEF 5/8"-24	1/4"	18	11	N9

### KMN/500

- Hose nipples
- Schlauchtüllen
- Koelslangnippels
- Raccords pour tuyaux souples



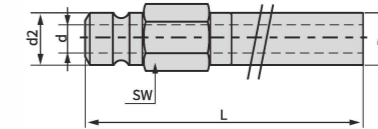
Mat.:  Brass  Messing  Messing  Laiton

REF	G	d1	d	L	l1	SW	SERIE(S)
KMN 6-6M	UNEF 7/16"-32	5	6	32	27	11	N6
KMN 6-9M	UNEF 7/16"-32	6	9	32	27	11	N6
KMN 9-11M	UNEF 5/8"-24	9	11	33	27	16	N9
KMN 9-13M	UNEF 5/8"-24	9	13	33	27	16	N9
500-19M	BSP 1/2"-14	16	19	56	46	22	N16



### KMEJP

- Extension pipes
- Verlängerungsrippel
- Verlengnipples
- Allonges

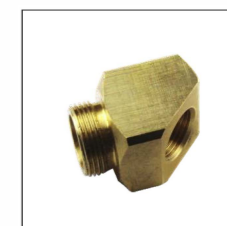
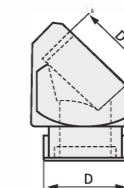


Mat.:  Brass  Messing  Messing  Laiton

REF	Rp	L	SW	d	d2	SERIE(S)
KMEJP 2514	1/8"	100	12	6.3	9	N6
KMEJP 2516	1/8"	150				
KMEJP 2518	1/8"	200				
KMEJP 2524	1/4"	100	15			
KMEJP 2526	1/4"	150				
KMEJP 2528	1/4"	200				
KMEJP 2534	3/8"	100	18	9.5	13	N9
KMEJP 2536	3/8"	150				
KMEJP 2538	3/8"	200				
KMEJP 3514	1/8"	100	15			
KMEJP 3516	1/8"	150				
KMEJP 3518	1/8"	200				
KMEJP 3524	1/4"	100				
KMEJP 3526	1/4"	150				
KMEJP 3528	1/4"	200				
KMEJP 3534	3/8"	100	18			
KMEJP 3536	3/8"	150				
KMEJP 3538	3/8"	200				

### KMN/500

- 90°Angles
- 90°Winkelstücke
- 90°Uitvoeringen
- Exécutions 90°



Mat.:  Brass  Messing  Messing  Laiton

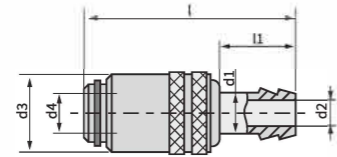
REF	D	SERIE(S)
KMN6-45	UNEF 7/16"-32	N6
KMN9-45	UNEF 5/8"-24	N9
500-40	1/2" BSP	N16



### KMMK 10



- Quick Release coupling with valve and hose nipple
- Schnellverschlusßkupplungen mit Schlauchtüllen
- Snelkoppeling met automatische afsluiting en koel-slangaansluiting
- Raccords rapides à fermeture automatique et raccord pour tuyaux souples



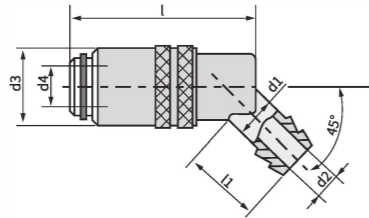
Mat.: ● Bass, O-Ring: Viton ○ Messig, O-Ringe: Viton ■ Messing, O-Ring: Vtion □ Laion, Joint torique: Viton

REF d <sub>1</sub> /d <sub>4</sub>	d <sub>2</sub>	d <sub>3</sub>	l	l <sub>1</sub>	P bar	T °C
KMMK 10 -9	6	17	47	17	15	200
KMMK 10 -13	9	22	61	25	10	200

### KMMK 12



- Quick Release coupling with valve and hose nipple
- Schnellverschlusßkupplungen mit Schlauchtüllen
- Snelkoppeling met automatische afsluiting en koel-slangaansluiting
- Raccords rapides à fermeture automatique et raccord pour tuyaux souples



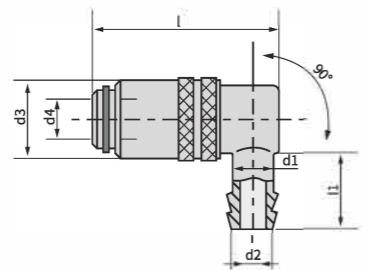
Mat.: ● Bass, O-Ring: Viton ○ Messig, O-Ringe: Viton ■ Messing, O-Ring: Vtion □ Laion, Joint torique: Viton

REF d <sub>1</sub> /d <sub>4</sub>	d <sub>2</sub>	d <sub>3</sub>	l	l <sub>1</sub>	P bar	T °C
KMMK 12 -9	6	17	41	17	15	200
KMMK 12 -13	9	22	51	25	10	200

### KMMK 15



- Quick Release coupling with valve and hose nipple
- Schnellverschlusßkupplungen mit Schlauchtüllen
- Snelkoppeling met automatische afsluiting en koel-slangaansluiting
- Raccords rapides à fermeture automatique et raccord pour tuyaux souples



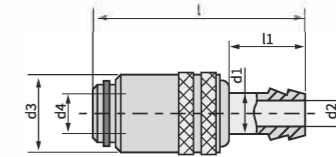
Mat.: ● Bass, O-Ring: Viton ○ Messig, O-Ringe: Viton ■ Messing, O-Ring: Vtion □ Laion, Joint torique: Viton

REF d <sub>1</sub> /d <sub>4</sub>	d <sub>2</sub>	d <sub>3</sub>	l	l <sub>1</sub>	P	T °C
KMMK 15 -9	6	17	41	19	15	200
KMMK 15 -13	9	22	51	28	10	200



### KMMK 100

- Quick Release coupling with valve and hose nipple
- Schnellverschlusßkupplungen mit Schlauchtüllen
- Snelkoppeling met automatische afsluiting en koel-slangaansluiting
- Raccords rapides à fermeture automatique et raccord pour tuyaux souples

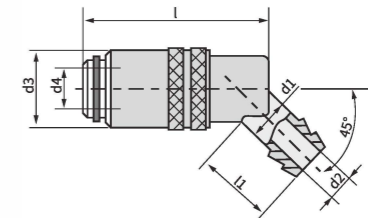


Mat.: ● Bass, O-Ring: Viton ○ Messig, O-Ringe: Viton ■ Messing, O-Ring: Vtion □ Laion, Joint torique: Viton

REF d <sub>1</sub> /d <sub>4</sub>	d <sub>2</sub>	d <sub>3</sub>	l	l <sub>1</sub>	P bar	T °C
KMMK 100 -9	6	17	47	17	15	200
KMMK 100 -13	9	22	61	25	10	200

### KMMK 120

- Quick Release coupling with valve and hose nipple
- Schnellverschlusßkupplungen mit Schlauchtüllen
- Snelkoppeling met automatische afsluiting en koel-slangaansluiting
- Raccords rapides à fermeture automatique et raccord pour tuyaux souples

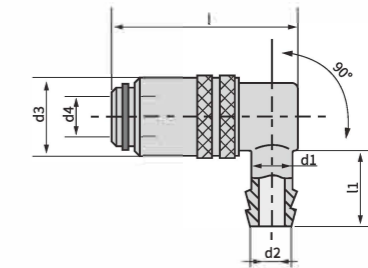


Mat.: ● Bass, O-Ring: Viton ○ Messig, O-Ringe: Viton ■ Messing, O-Ring: Vtion □ Laion, Joint torique: Viton

REF d <sub>1</sub> /d <sub>4</sub>	d <sub>2</sub>	d <sub>3</sub>	l	l <sub>1</sub>	P bar	T °C
KMMK 120 -9	6	17	41	17	15	200
KMMK 120 -13	9	22	51	25	10	200

### KMMK 150

- Quick Release coupling with valve and hose nipple
- Schnellverschlusßkupplungen mit Schlauchtüllen
- Snelkoppeling met automatische afsluiting en koel-slangaansluiting
- Raccords rapides à fermeture automatique et raccord pour tuyaux souples



Mat.: ● Bass, O-Ring: Viton ○ Messig, O-Ringe: Viton ■ Messing, O-Ring: Vtion □ Laion, Joint torique: Viton

REF d <sub>1</sub> /d <sub>4</sub>	d <sub>2</sub>	d <sub>3</sub>	l	l <sub>1</sub>	P bar	T °C
KMMK 150 -9	6	17	41	19	15	200
KMMK 150 -13	9	22	51	28	10	200